

BA Boeing Co. NYSE

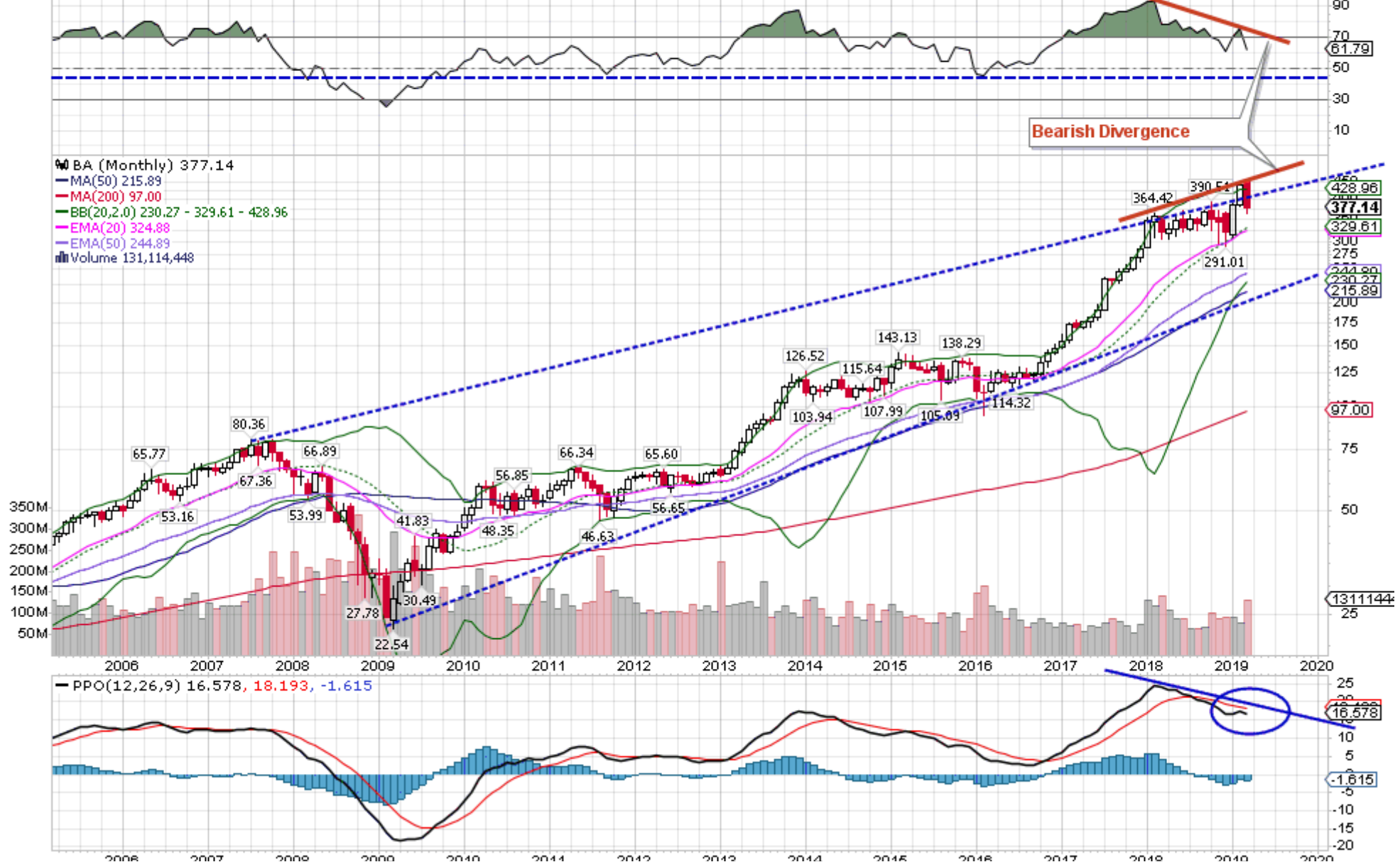
© StockCharts.com

Industrial / Aerospace

Open: 446.01	Ask:	P/E: 21.09	Options: yes
High: 446.01	Ask Size:	EPS: 17.88	Annual Dividend: 7.185
Low: 363.33	Bid:	Last Size:	Yield: 1.91%
Prev Close: 439.96	Bid Size:	VWAP:	SCTR (Large): 49.2

Wednesday 13-Mar-2019
 ▼ **-14.28%**
 Chg: **-62.82**
 Last: **377.14**
 Volume: **131,114,448**

▲ RSI(14) 61.79



14.3.2019

Print SharpCharts from StockCharts.com

2000 2001 2002 2003 2004 2005 2006 2007 2008 2009 2010 2011 2012 2013 2014 2015 2016 2017 2018 2019 2020