

SOXX iShares PHLX Semiconductor ETF Nasdaq GM + BATS

© StockCharts.com

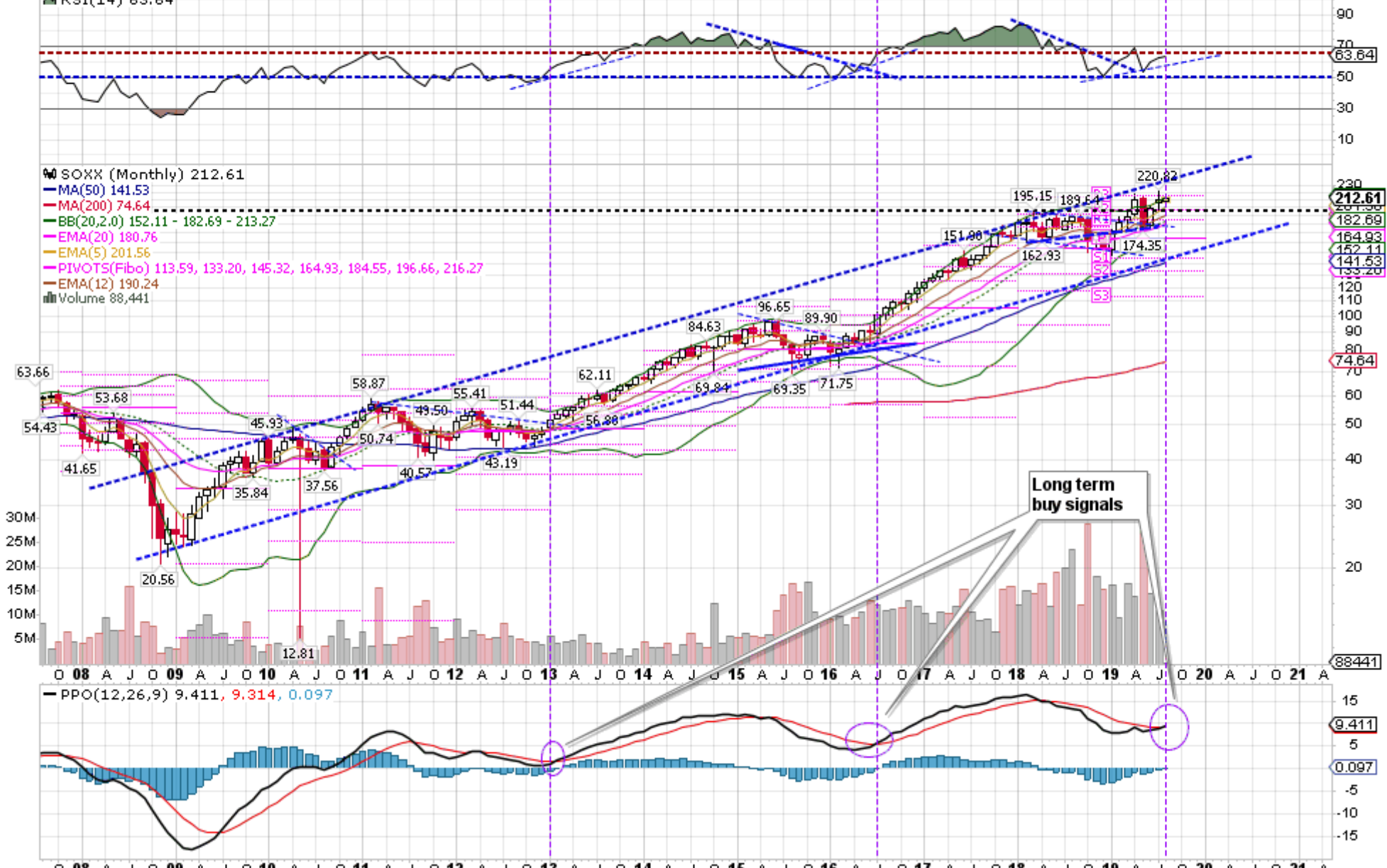
Thursday 1-Aug-2019 10:41 am

Open:	208.69	Ask:	212.75	P/E:	
High:	212.92	Ask Size:	200	EPS:	
Low:	208.69	Bid:	212.64	Last Size:	0 shrs
Prev Close:	209.58	Bid Size:	200	VWAP:	

Options:	yes
Annual Dividend:	2.2955
Yield:	1.08%
SCTR (ETF):	98.8

▲	+1.45%
Chg:	+3.03
Last:	212.61
Volume:	88,441

▲ RSI(14) 63.64



U 00 X J U 02 X J U 04 X J U 06 X J U 08 X J U 10 X J U 12 X J U 14 X J U 16 X J U 18 X J U 20 X J U 22 X J U 24 X J U 26 X J U 28 X