

\$SPX S&P 500 Large Cap Index INDX

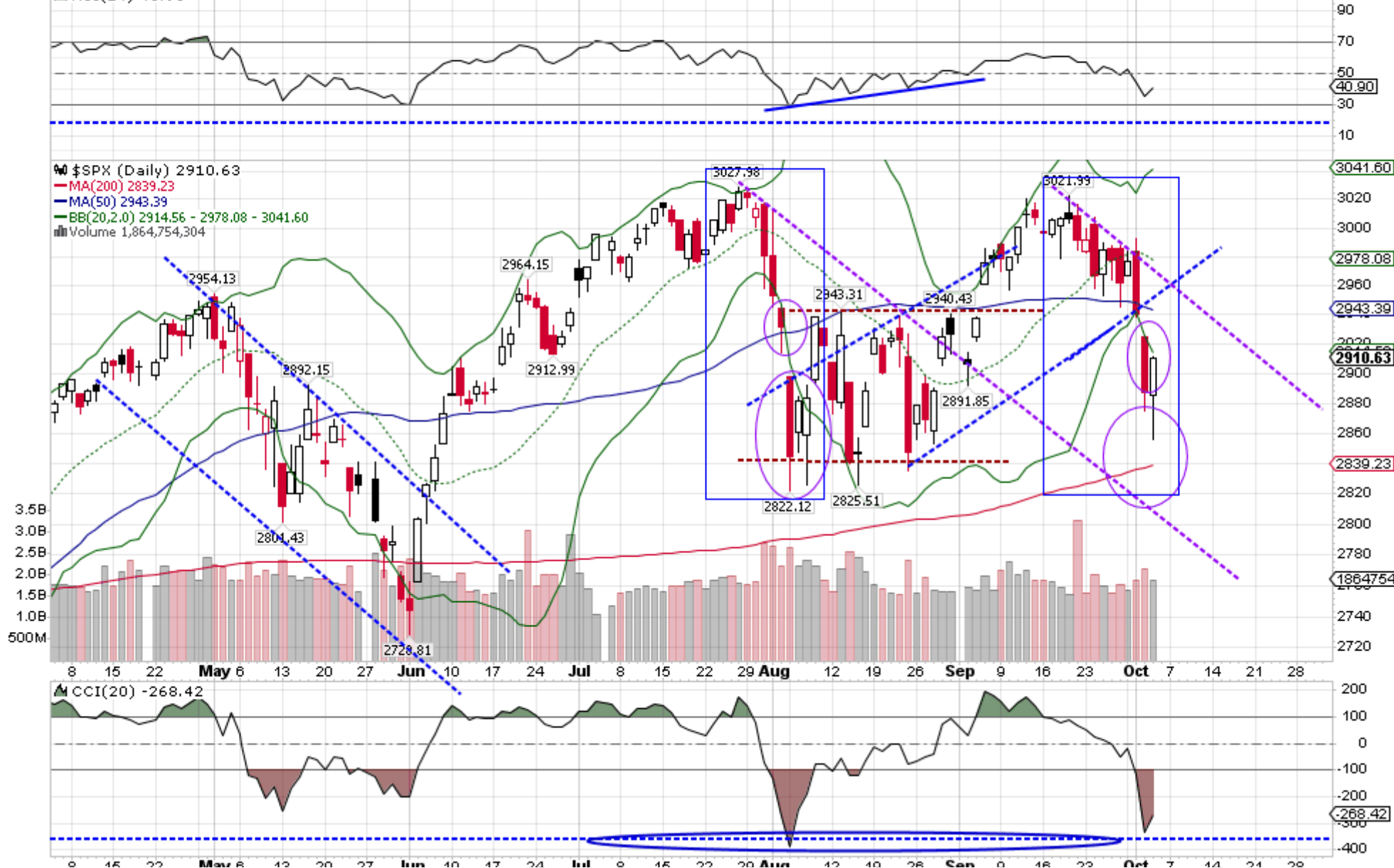
© StockCharts.com

Thursday 3-Oct-2019

Open:	2885.38	Ask:		P/E:		Options:	no
High:	2911.13	Ask Size:		EPS:		Annual Dividend:	N/A
Low:	2855.94	Bid:		Last Size:		Yield:	N/A
Prev Close:	2887.61	Bid Size:		VWAP:		SCTR:	

▲	+0.80%
Chg:	+23.02
Last:	2910.63
Volume:	1,864,754,304

▲ RSI(14) 40.90



0 10 22 **may** 0 10 20 27 **Jun** 0 10 17 24 **Jul** 0 10 22 28 **Aug** 14 18 20 **sep** 8 10 20 **Oct** 7 17 21 28