

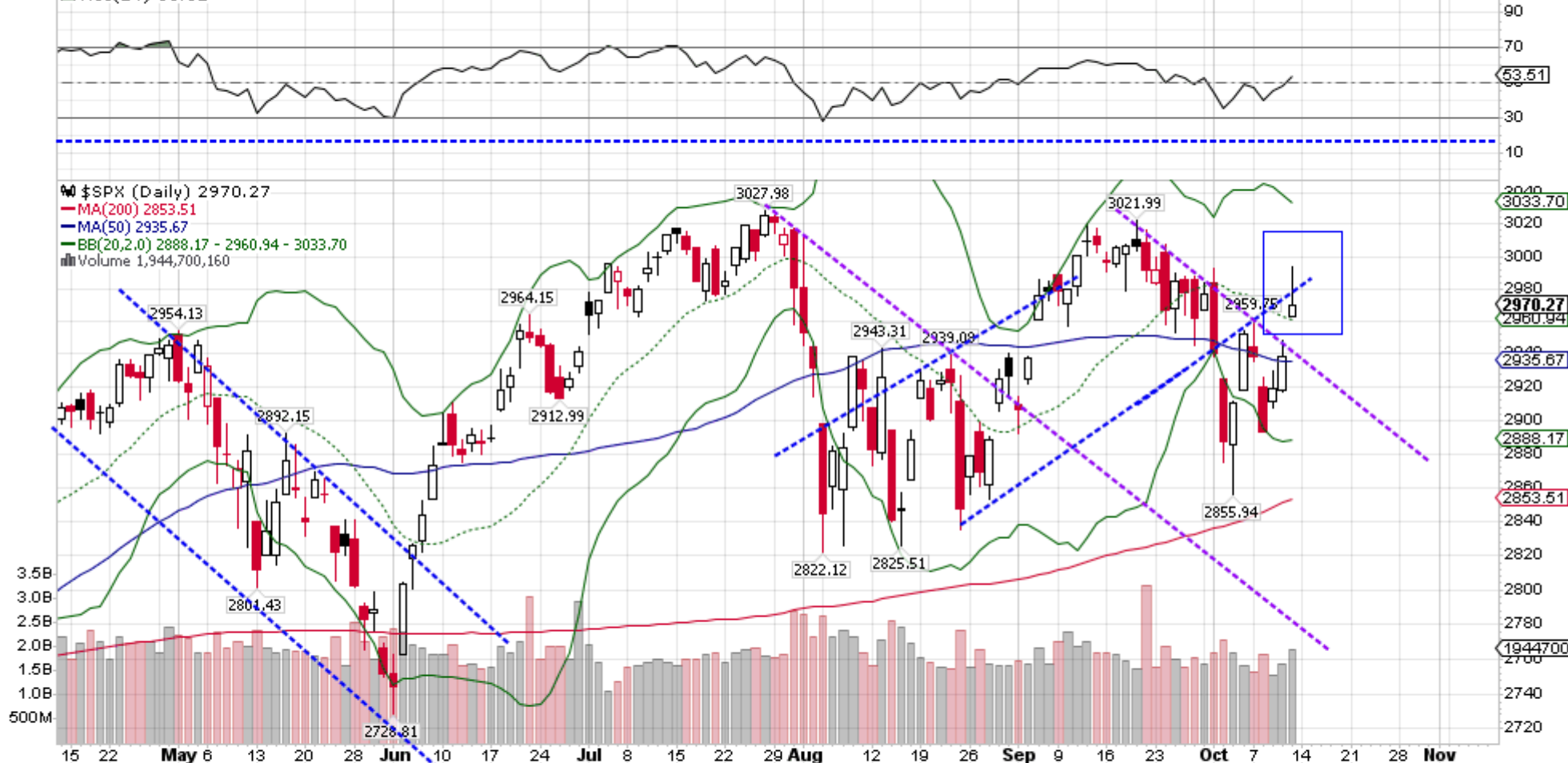
\$SPX S&P 500 Large Cap Index INDX

© StockCharts.com

Open: 2963.07	Ask:	P/E:	Options: no
High: 2993.28	Ask Size:	EPS:	Annual Dividend: N/A
Low: 2963.07	Bid:	Last Size:	Yield: N/A
Prev Close: 2938.13	Bid Size:	VWAP:	SCTR:

Friday 11-Oct-2019
 ▲ **+1.09%**
 Chg: **+32.14**
 Last: **2970.27**
 Volume: **1,944,700,160**

▲ RSI(14) 53.51



▲ CCI(20) 30.80



19 22 **may** 5 13 20 28 **Jun** 10 17 24 **Jul** 6 13 22 28 **Aug** 14 18 20 **Sep** 8 10 20 **Oct** 7 14 21 28 **Nov**