

\$SPX S&P 500 Large Cap Index INDX

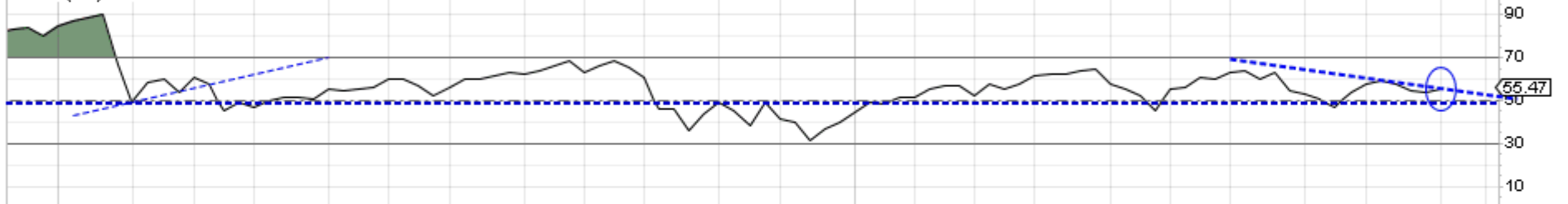
© StockCharts.com

Friday 11-Oct-2019

Open: 2944.23	Ask:	P/E:	Options: no
High: 2993.28	Ask Size:	EPS:	Annual Dividend: N/A
Low: 2892.66	Bid:	Last Size:	Yield: N/A
Prev Close: 2952.01	Bid Size:	VWAP:	SCTR:

▲ **+0.62%**
 Chg: **+18.26**
 Last: **2970.27**
 Volume: **8,280,569,856**

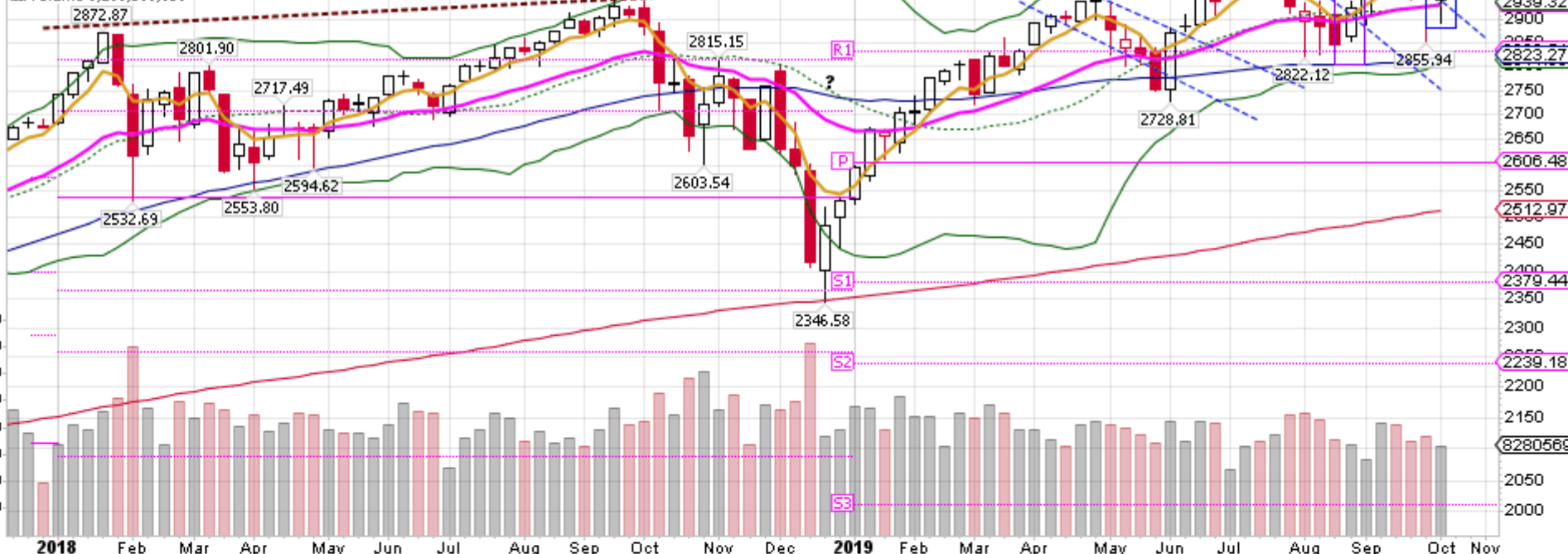
▲ RSI(14) 55.47



📊 \$SPX (Weekly) 2970.27

— MA(50) 2823.27
 — MA(200) 2512.97
 — BB(20,2,0) 2811.55 - 2939.32 - 3067.09
 — EMA(20) 2933.86
 — EMA(5) 2964.69
 — PIVOTS(Fibo) 2012.15, 2239.18, 2379.44, 2606.48, 2833.51, 2973.77, 3200.81

📊 Volume 8,280,569,856



— PPO(12,26,9) 1.179, 1.319, -0.140



