

\$SPX S&P 500 Large Cap Index INDX

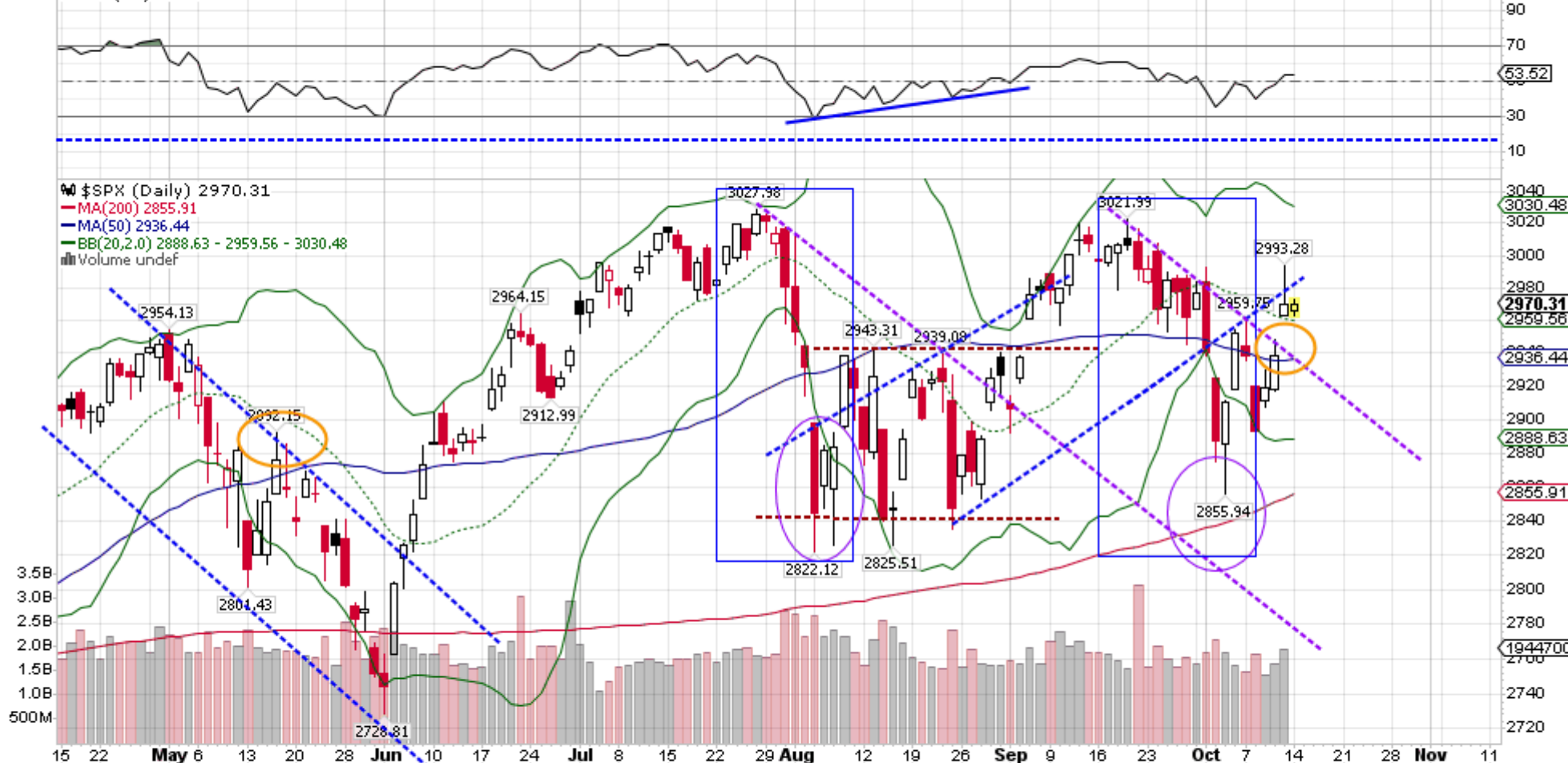
© StockCharts.com

Monday 14-Oct-2019 11:58 am

Open:	2965.81	Ask:	0.00	P/E:		Options:	no
High:	2972.84	Ask Size:	0	EPS:		Annual Dividend:	N/A
Low:	2962.94	Bid:	0.00	Last Size:	0 shrs	Yield:	N/A
Prev Close:	2970.27	Bid Size:	0	VWAP:		SCTR:	

▲ **+0.00%**
 Chg: **+0.04**
 Last: **2970.31**
 Volume: **0**

▲ RSI(14) 53.52



▲ CCI(20) 19.59



10 22 **may** 5 12 20 28 **Jun** 10 17 24 **Jul** 8 15 22 29 **Aug** 12 19 26 **Sep** 9 16 23 **Oct** 7 14 21 28 **Nov** 11