

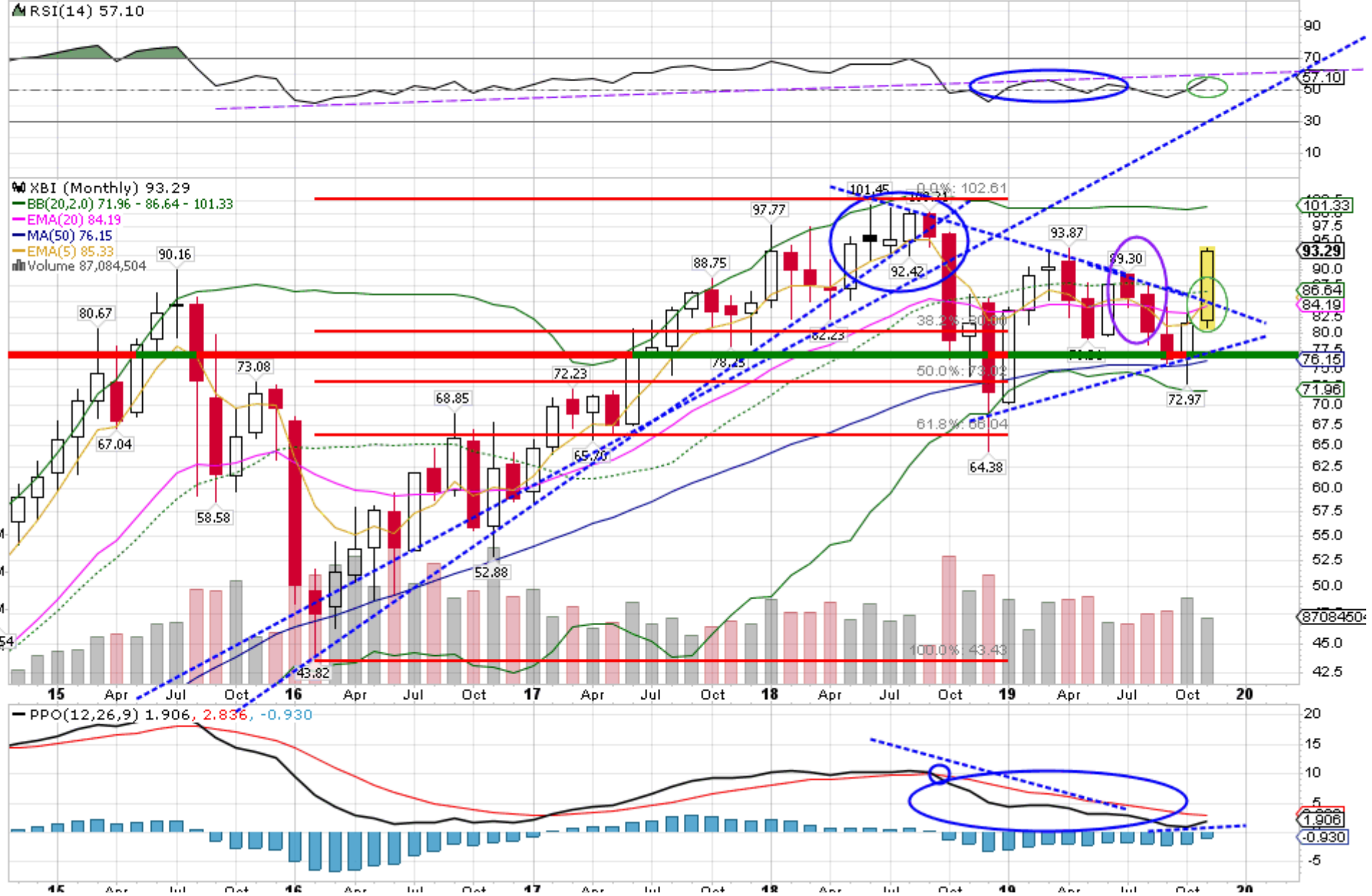
XBI SPDR S&P Biotech ETF NYSE + BATS

© StockCharts.com

Wednesday 27-Nov-2019 3:50 pm

Open: 82.08	Ask: 93.29	P/E:	Options: yes
High: 93.65	Ask Size: 100	EPS:	Annual Dividend: 0.01515
Low: 81.00	Bid: 93.28	Last Size: 0 shrs	Yield: 0.02%
Prev Close: 81.63	Bid Size: 902	VWAP:	SCTR (ETF): 98.5

▲ **+14.28%**
 Chg: **+11.66**
 Last: **93.29**
 Volume: **87,084,504**



12 Apr Jun Oct 12 Apr Jun Oct 12 Apr Jun Oct 12 Apr Jun Oct