

SOXX iShares PHLX Semiconductor ETF Nasdaq GM + BATS

© StockCharts.com

Open: **254.26** Ask: **252.95** P/E: Options: **yes**
 High: **256.29** Ask Size: **300** EPS: Annual Dividend: **3.09856**
 Low: **247.26** Bid: **252.84** Last Size: **0 shrs** Yield: **1.23%**
 Prev Close: **251.10** Bid Size: **200** VWAP: SCTR (ETF): **99.6**

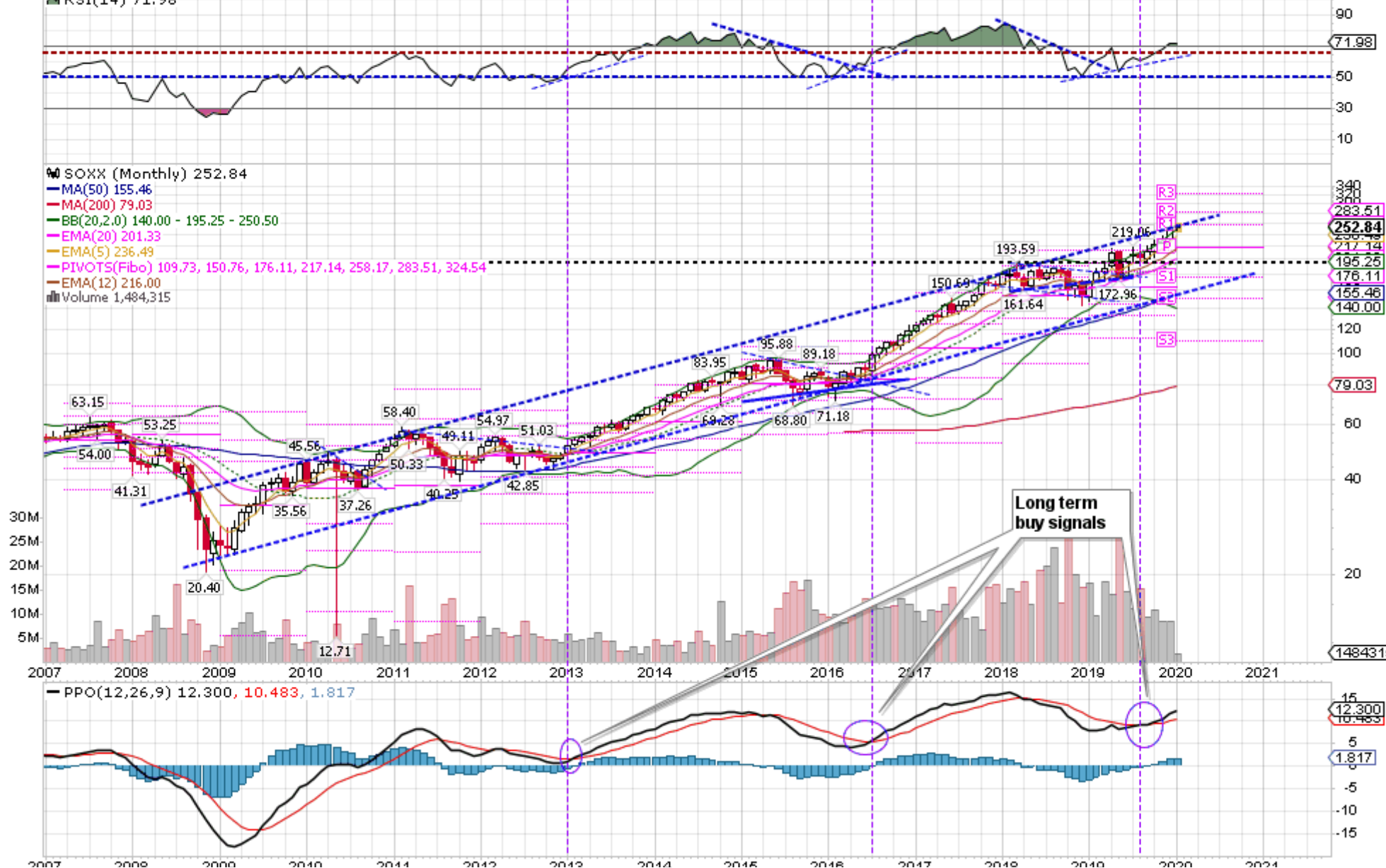
Tuesday 7-Jan-2020 10:44 am

▲ **+0.69%**
 Chg: **+1.74**
 Last: **252.84**
 Volume: **1,484,315**

▲ RSI(14) 71.98

SOXX (Monthly) 252.84

MA(50) 155.46
 MA(200) 79.03
 BB(20,2.0) 140.00 - 195.25 - 250.50
 EMA(20) 201.33
 EMA(5) 236.49
 PIVOTS(Fibo) 109.73, 150.76, 176.11, 217.14, 258.17, 283.51, 324.54
 EMA(12) 216.00
 Volume 1,484,315



7.1.2020

Print SharpCharts from StockCharts.com

2007 2008 2009 2010 2011 2012 2013 2014 2015 2016 2017 2018 2019 2020 2021